


PROMINENCE
ESTATES



RESIDENTIAL
PROPERTY EXPERTS

COVENTRY, WARWICKSHIRE
& LEAMINGTON SPA

RODYARD WAY,
COVENTRY, CV1 2UD

£1,250 PER CALENDAR

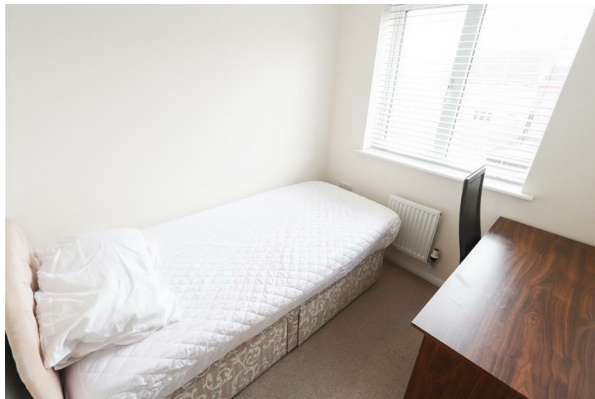
RODYARD WAY

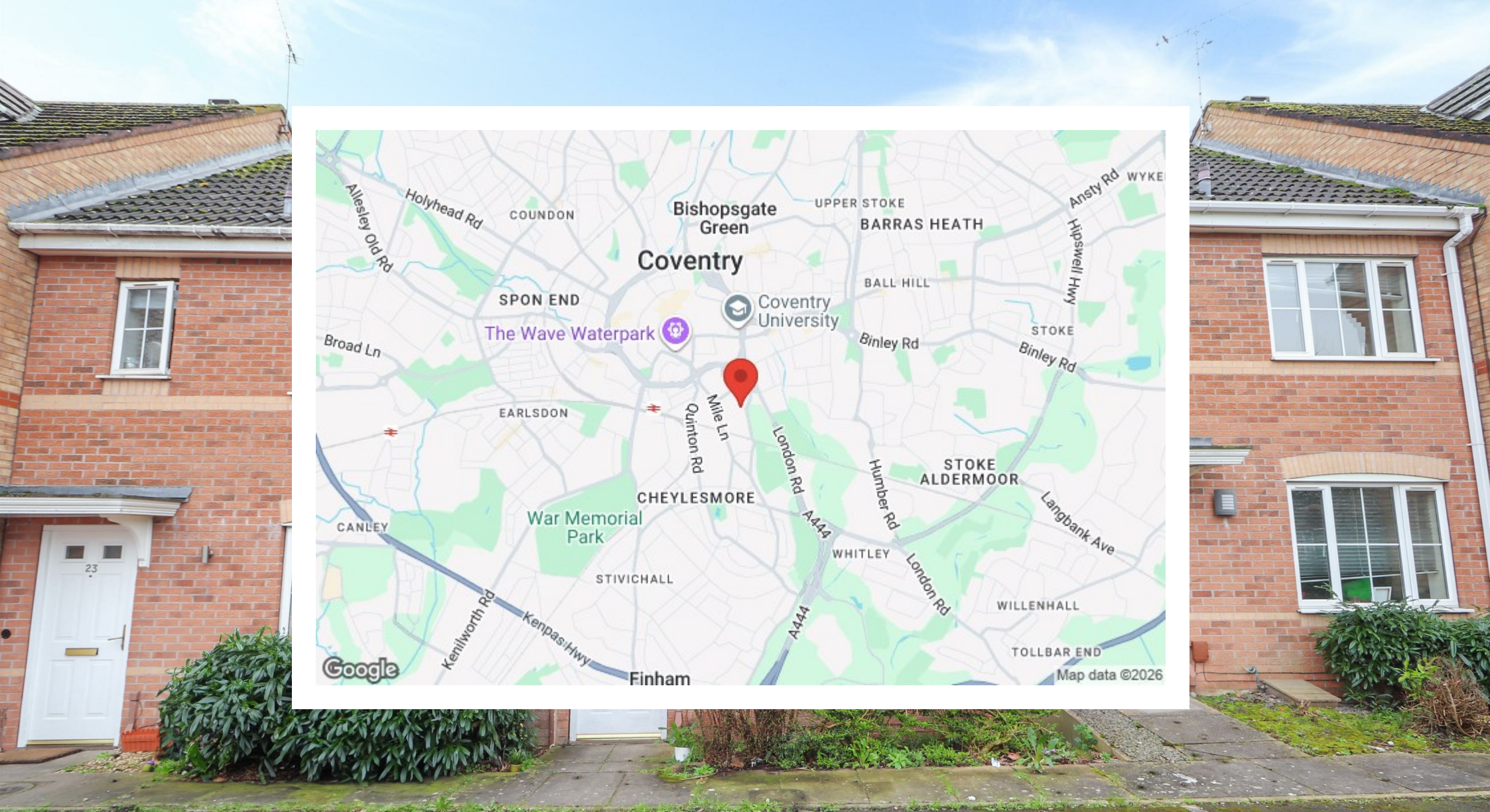


PROMINENCE
— ESTATES —

Embrace tranquility in this charming 3 bedroom furnished house, ideally situated in a peaceful locale with the added convenience of driveway parking. Tucked away in a quiet neighbourhood, this home offers a serene retreat while still being within walking distance to Coventry city centre. Perfect for those seeking both relaxation and accessibility, this property provides easy access to urban amenities and entertainment options. Additionally, its short drive to Jaguar Land Rover enhances its appeal for professionals or enthusiasts of the automotive industry. Experience the perfect blend of comfort, convenience, and tranquility in this inviting residence.







Prominence Estates
5 Queen Isabels Avenue,
Cheylesmore,
Coventry,
CV3 5GE

02476 309 826
lettings@prominenceestates.com
www.prominenceestates.com


PROMINENCE
— ESTATES —